



Design Plan and Proposal For a Coogee Community Garden

This proposal has been put together by the members of this community group.

March 2020

Subject to minor changes to align with the Establishment of Community Gardens Policy.

Our Incorporated Association Name:

Coogee Community Garden WA

Incorporated Association since 15th November 2018 IARN: A1027020E

Managed by adopting the model rules of the Department of Mines, Industry Regulation and Safety of Western Australia.

Guided by the City of Cockburn Guidelines for Community Gardens 2019.

Vision:

To establish a safe community edible garden accessible to the residents of Coogee, North Coogee, Port Coogee and surrounding suburbs, by providing both public and private growing plots. Having a goal of producing as naturally organic foods as possible to aid in striving for a more sustainable and healthier living lifestyle.

Mission:

To provide a place for people to meet and greet other residents with the same interests. To share knowledge and experience with growing their own produce. To learn how to take control for a healthier life starting with what we eat. We will support biodiversity by striving to plant non-hybrid heirloom vegetables and fruits, so we can collect, save and propagate new crops.

Values:

Caring for the environment and our own bodies. Caring for the people in our community. Minimal use of tools and machinery. The garden should produce no more noise than a normal suburban household. Respect for all people regardless of age, gender, race or religion.

Community Support:

- We have 15 signed members.
- 91% local residents who support the concept of a community garden in the suburb of Coogee based on a City of Cockburn survey December 2019.
- Our Facebook page has 230 followers. <https://www.facebook.com/Coogee-Community-Garden-WA-236820090374247>
- Coogee Beach Progress Association.
- Cockburn Men's Shed.
- Cockburn Rotary Club.
- Port Coogee Community Association.
- Bunnings
- Kleenheat
- Raspa Property Group
- The City of Cockburn. Guided by the City's policy guidelines, rules and regulations.

A community board on the side of the shed will display a sign of all the local businesses and groups who support our garden.

Proposed Garden Site:

Our preferred site is Rotary Park, King Street Coogee. The site is located close to local residents, which was agreed at our inaugural meeting to be an important factor for sustainability.

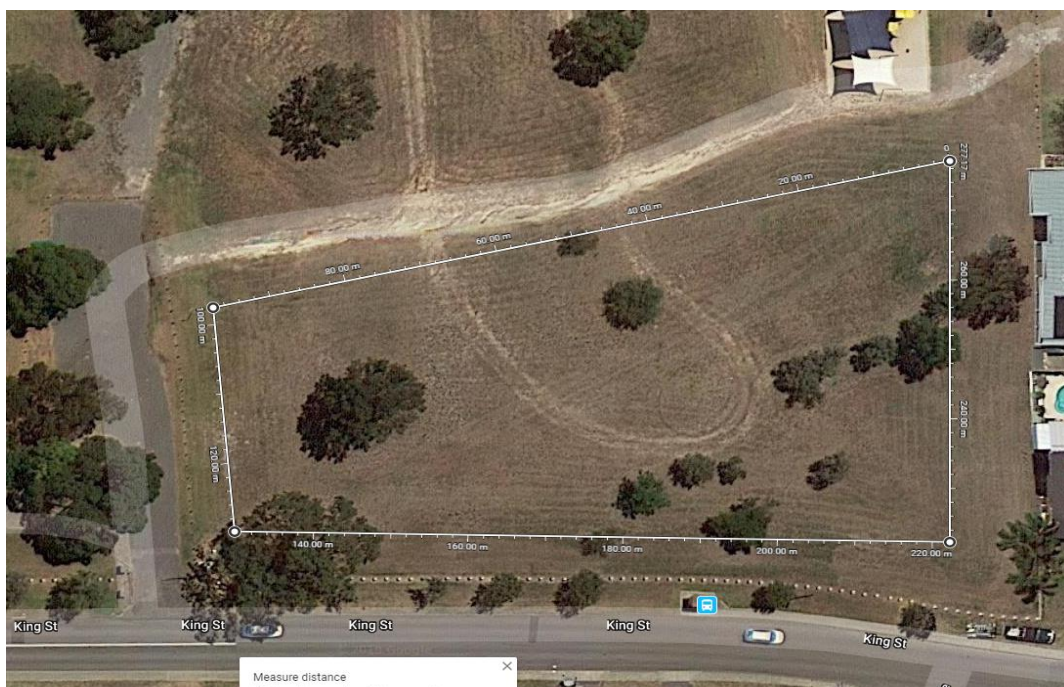
Importantly, it already has an existing heritage marker dedicated to the market gardeners of the area and it's an original site of a market garden.

There is approximately 3,700 sqm area of sloping/ graduated land currently consisting of scrub vegetation which is maintained with mowing. The northern limit is near the existing footpath. The southern border is near the bollards along King Street.

This is an ideal piece of land for the following reasons.

- 1) Located on the eastern side of the hill giving protection from the salt air off the ocean.
- 2) Power, mains water and Bore water are all accessible.
- 3) CCTV cameras will be considered, and passive surveillance encouraged to help provide security.
- 4) Existing carpark which is locked each night and unlocked each morning which gives good security to large garden assets. Gardeners will come and go at different times so the size should be adequate.
- 5) Vehicle access from carpark to potential garden site for deliveries.
- 6) Accessible by public transport (Transperth bus route 522 has a stop adjacent to the park)
- 7) Existing BBQ, drinking fountain and picnic facilities with lighting, are provided on the opposite side of the carpark.
- 8) Existing children's playground and a dog friendly park.
- 9) Existing mature almond tree already and fennel growing in the surrounding scrub land.
- 10) Doesn't encroach on any existing sporting activities. Ample space is still available for a dog exercise area and the future proposed golf club and driving range. Ample room to build in stages.

Without a doubt this is the perfect site as it provides for all members of the community by catering for all family requirements. Below is a satellite view of the overall proposed site at Rotary Park.



The Garden Name is:

The Coogee Community Garden.

Design Layout:

Secure lockable fence for perimeter to keep out rabbits, dogs, theft, vandalism etc. Gates for trailer and pedestrian access.

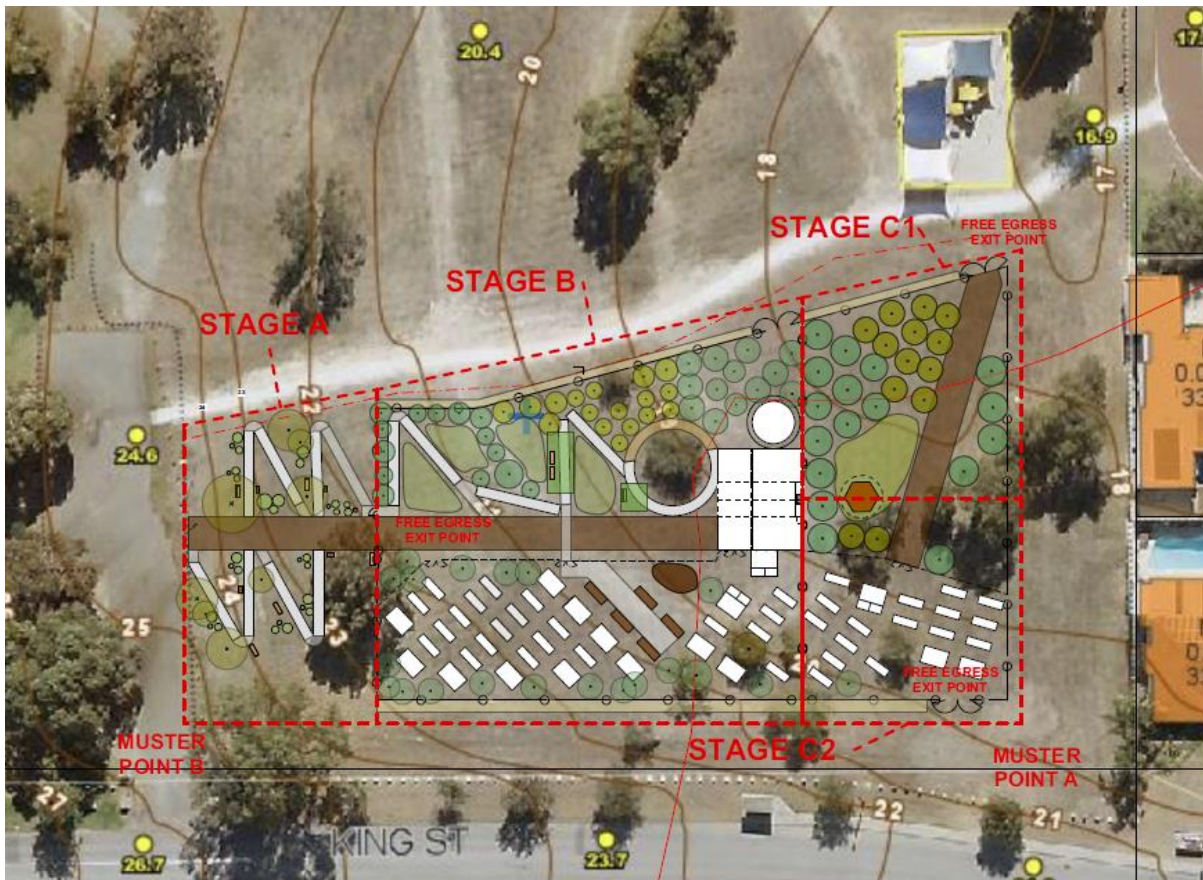
Secure section for private growing allotments, raised garden beds will be used due to poor soil quality. Pathways are wheelchair accessible.

Shed with electricity for securing first aid kit, tools and fertilizers. To house and protect the worm farms, the seed propagation and to collect rainwater. Trellised with vines to for a tranquil vision.

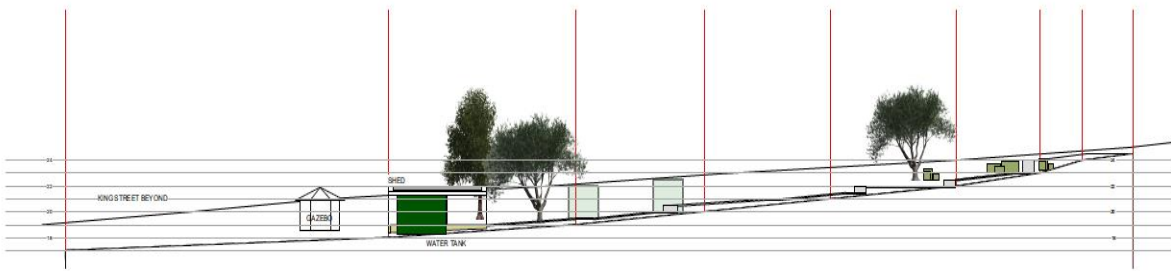
The existing trees will be preserved and incorporated into the landscape plan to add to the beauty and shade of the garden.

Overall design of garden plan. Stage A and B build simultaneously. Stage C subject to demand (may not be developed)

Initial connection to mains water for the retic. Bore option to be considered. The water tank will not be seen from King St.



Elevation view of garden shows the shed roof and fencing will be below the height of King Street. The entire infrastructure of the garden will be built below the level of King Street. Neighbours will still see across the parkland and beyond.



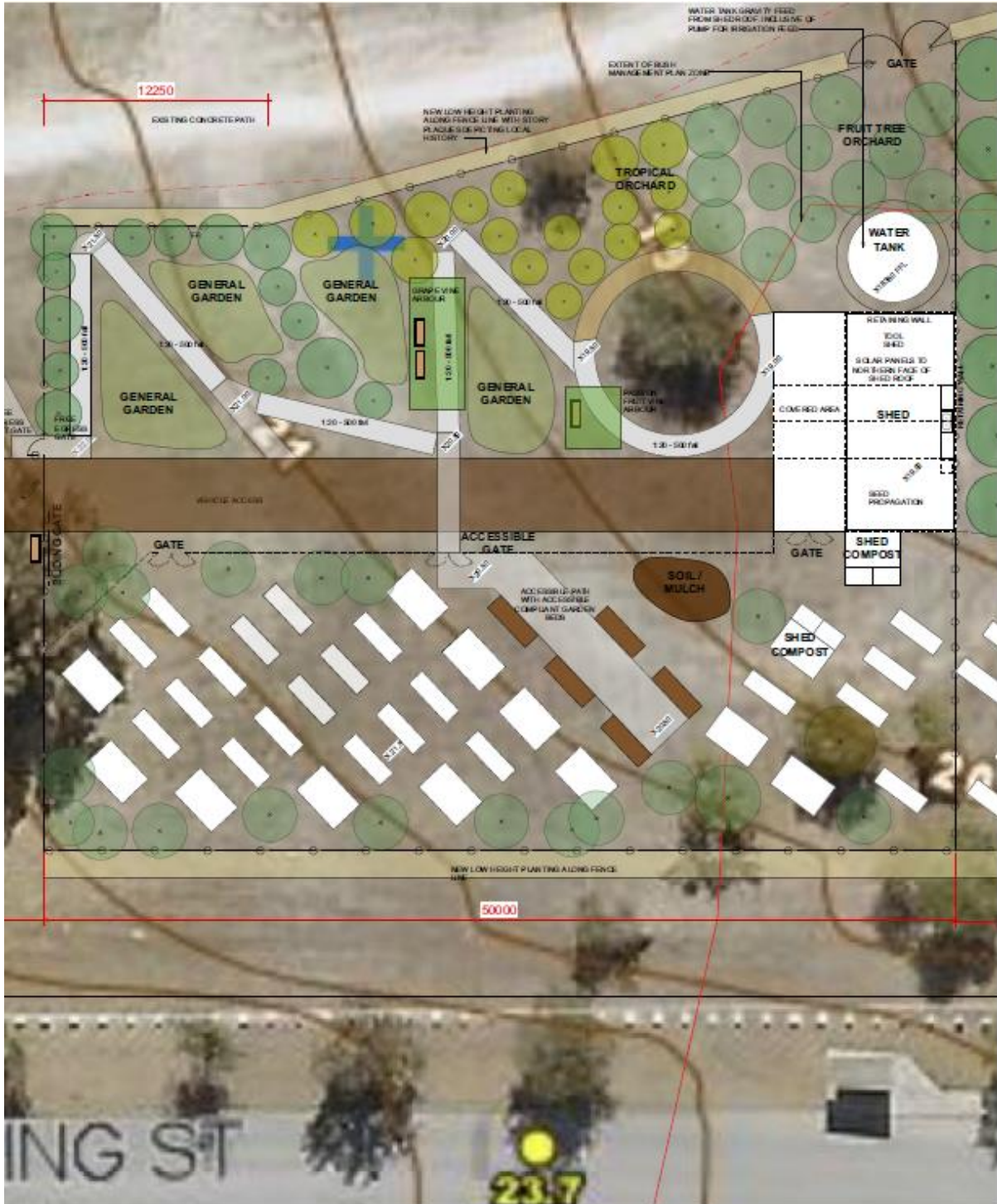
5 SITE SECTION - VIEW SOUTH
Scale: 1:300
Date: 09.02.2020

Stage A is a dedicated area near the main gate to recognise the early market gardeners of the region and will consist of a sensory garden with story boards. This will be open 24 hours a day.



2 PART SITE PLAN - STAGE A
Scale: 1:200
Date: 09.02.2020

Stage B is the members garden which is to be secured at night for protection from rabbits, dogs, theft, vandalism etc. The garden can be accessed by the public on weekends. The opening times of the garden are Summer (November-March) 7am-7pm Winter (April-October) 7am-6pm.



Stage C will only be considered if the demand for the garden requires more space.



4 PART SITE PLAN- STAGE C1 AND C2
 Scale: 1:200
 Date: 09.02.2020

Building Timeline:

Within first 6 months.

- Invite the community to a turning of the sod ceremony.
- Erect a fence and lockable entry points to provide security for Stage B.
- Install the shed, retic system and rainwater tank Stage A & B.
- Create the designed layout of Stage A & B, using sustainable materials.
- All weather wheelchair accessible internal paths.
- Initial soil and mulch delivery.

Within first 12 months.

- Erect the history story boards and signs.
- Begin installing the sensory garden in Stage A.
- Continuation of reticulation system.
- Landscaping the perimeter fence line.
- Extra soil and mulch delivery.
- Erect a welcome sign and other signage advertisement for supporting entities.

Future Sustainability.

- Soil and mulch delivery as needed.
- Maintenance of infrastructure and retic.
- Set up composting and worm farms.
- Adding private allotments as needed.
- Add low shade canvas to areas of need.
- Continuing the art of permaculture.
- Establishing a bore for a source of water.

Funding Support:

- Apply for State Government community grants.
- Apply to the Lotteries Commission.
- Apply for City of Cockburn community grants.
- Apply for various other community grants.
- Annual membership fees.
- Donations.
- Selling excess plants and produce at local community events (e.g. Swap Mart run by Cockburn Rotary Club when operational)
- Various community fundraising options (e.g. Sausage sizzle at Bunnings)

Making the Garden Sustainable for the Future:

Create a calendar of annual events which include the greater community. To be held off site at the Coogee Community Hall. For example;

- Workshop events.
- Guest Speaker Educational events.

A Few group sessions on site. For example;

- Busy Bees.
- Harvest days.
- Access days for School Excursions.
- Access days for Aged Care.
- Access days for people with disabilities.

Make Good Plan:

To return the garden site to its original condition by selling or donating all infrastructure and clearing area back to dry grass.

On behalf of the Coogee Community Garden WA, thank you for your consideration. My contact details are e-mail cooagegardenwa@gmail.com

Kind regards



Karen Moulton
Chairperson
Coogee Community Garden WA